

## ATLANTIC HPT-30-150 (1125-9308481)



**Control type**  
 NC

**Construction year**  
 2002

**Machine no.**  
 1125-9308481

**Make**  
 ATLANTIC

**Location**  
 48683 Ahaus

\*\* from a maintenance workshop

\*\* very good / well-maintained condition (!!)

Equipment:

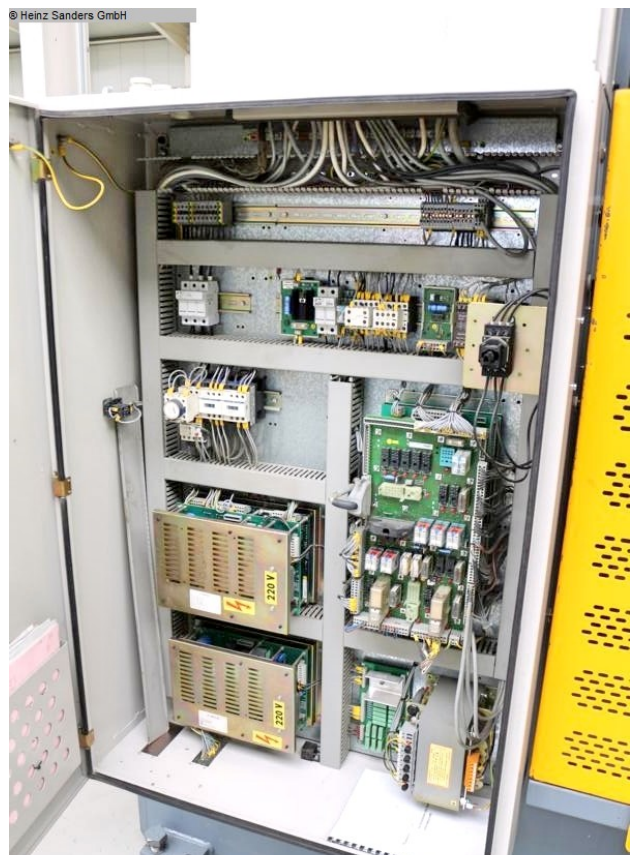
- simple NC electro-hydraulic press brake
- \* with torsion shaft
- ATLANTIC NC control ATL 550
- \* Positioning of the backgauge (X)
- \* Positioning of the depth adjustment (Y1 Y2)
- \* Possibility of programming different programs
- \* Memory capacity max. 200 programs - max. 400 blocks
- \* Swivel control panel, front left
- NC electro-motorized backgauge (X axis)
- \* 2x manually adjustable stop fingers
- 1x set of split roller foot upper tools
- 1x rotating universal die block
- 1x freely movable 2-hand/foot control
- Safety guard on the side behind the machine
- Operating instructions Circuit diagram

## Machine attributes

pressure:	150 t
chamfer length:	3100 mm
distance between columns:	2600 mm
throat:	250 mm
daylight:	325 mm
piston stroke:	120 mm
table height:	875 mm
adjustment speed:	70.0 mm/sec
working feed:	9.0 mm/sec
return speed:	60.0 mm/sec
pressure:	220 bar
Control:	ATL 550
total power requirement:	5.6 kW
weight:	8400 kg
range L-W-H:	3500 x 1700 x 2240 mm

## Machine images





**Papenburg**  
 Heinz Sanders GmbH  
 Friederikenstraße 100  
 26871 Papenburg  
 info@heinz-sanders.de

**Niederlangen**  
 Heinz Sanders GmbH  
 Fresenburger Weg 4  
 49779 Niederlangen  
 maschinen@heinz-sanders.de

**Spelle**  
 Heinz Sanders GmbH  
 Robert-Bosch-Straße 9  
 48480 Spelle  
 spelle@heinz-sanders.de

