

FALKEN // GMS MAX 40 (1125-8389015)



Control type
konventionell

Machine no.
1125-8389015

Make
FALKEN // GMS

Location
Ahaus

** Exhibition machine - NEW (!!)

Equipment:

- Maximum performance, minimum consumption
- hydraulic combination machine for bending and cutting processes
- * for e.g. structural steel or solid material
- Bending mode with 3x different angle settings
- manual and automatic mode selectable
- simultaneous bending and cutting processes when the machine is in operation
- "ECO mode" = hydraulic pump only runs when the foot switch is pressed
- freely movable foot switch
- operating instructions

technical data:

- steel 45 kg / mm² .. bending Ø 36.0 mm / cutting Ø 36.0 mm
- * for 2x pieces - steel 45 kg / mm² .. bending Ø 20.0 mm / cutting Ø 24.0 mm
- steel 65 kg / mm² .. bending Ø 32.0 mm / cutting Ø 32.0 mm
- * for 2 pieces - steel 65 kg / mm² .. bending Ø 18.0 mm / cutting Ø 20.0 mm
- steel 85 kg / mm² .. bending Ø 26.0 mm / cutting Ø 28.0 mm

* for 2 pieces - steel 85 kg / mm² .. bending Ø 14.0 mm / cutting Ø 18.0 mm

* Machine video:

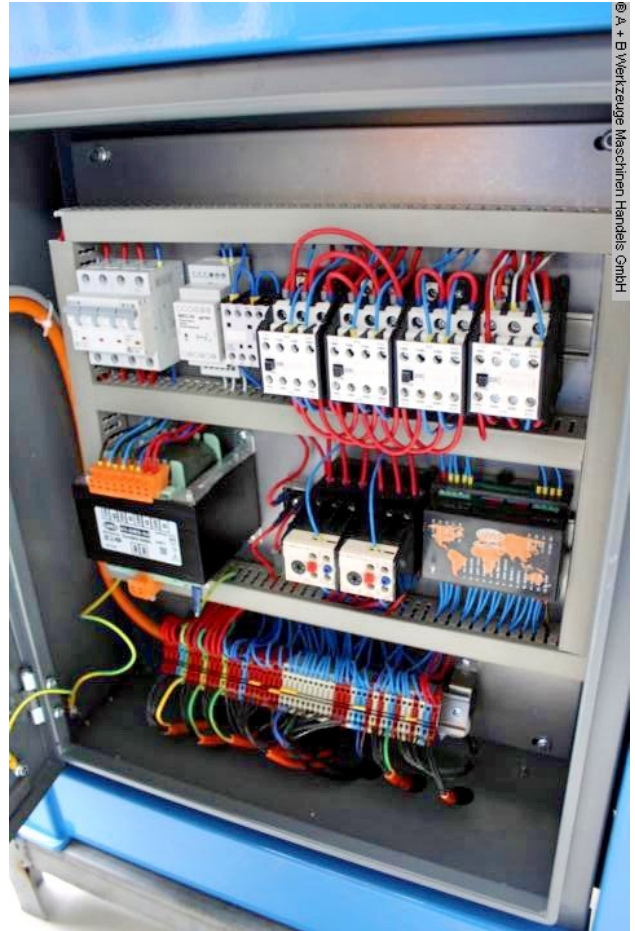
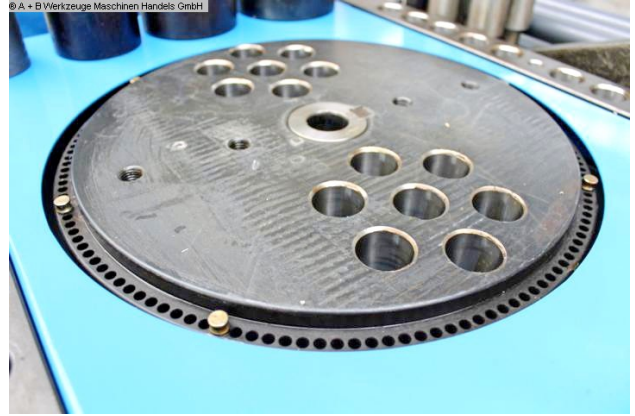
<https://www.youtube.com/watch?v=zagTSA81VyA>

Machine attributes

bending diam. - max.:	36.0 mm ST
cutting thickness max.:	36.0 mm ST
motor:	1450 U/min
oil volume:	32.0 l
motor:	380 Volt 50 Hz
total power requirement:	5.5 kW
weight:	650 kg
range L-W-H:	1470 x 1200 x 1020 mm

Machine images





GMS GÖÇMAKSAN®			
BÜKÜM KAPASİTESİ / BENDING CAPACITY			
Çelik Kalitesi / Steel Quality	Çap / Büküldiği Adet / Diameter / Number Can Be Bonded		
45 kg / mm ²	Ø 36 x 1	Ø 18 x 2	Ø 14 x 2
65 kg / mm ²	Ø 32 x 1	Ø 16 x 2	Ø 14 x 2
85 kg / mm ²	Ø 28 x 1	Ø 12 x 2	Ø 9 x 2
Çelik Kalitesi / Steel Quality			
	CAP / BÜKEBİLDİĞİ ADET / DIAMETER / NUMBER CAN BE BENDED		
45 kg / mm ²	Ø 36 x 1	Ø 18 x 2	Ø 14 x 2
65 kg / mm ²	Ø 28 x 1	Ø 16 x 2	Ø 14 x 2
85 kg / mm ²	Ø 26 x 1	Ø 12 x 2	Ø 9 x 2
KESİM KAPASİTESİ / CUTTING CAPACITY			
Çelik Kalitesi / Steel Quality			
Adet / Piece	45 kg / mm ²	65 kg / mm ²	85 kg / mm ²
1	Ø 36	Ø 32	Ø 28
1	Ø 24	Ø 20	Ø 18
2	Ø 18	Ø 16	Ø 14
3	Ø 16	Ø 14	Ø 12
3	Ø 14	Ø 12	Ø 10
4	Ø 12	Ø 10	Ø 8
5	Ø 10	Ø 8	Ø 6
1	30	24	20
2	20	16	12
3	16	14	10
4	14	12	10
1	70 x 12	70 x 10	70 x 8
2	60 x 15	60 x 10	60 x 8
3	50 x 15	50 x 12	50 x 10
FOR MODELS SPECIAL: MAX 40 SERİ NO / SERIAL NO ÜRETİM YILI / PRODUCTION YEAR: 2022 MOTOR GÜCÜ / MOTOR POWER: 2 kW MOTOR DEVRİ / MOTOR REVOLUTION: 600 d/d MOTOR GÜCÜ / MOTOR POWER: 3 kW MOTOR DEVRİ / MOTOR REVOLUTION: 1500 d/d AĞIRLIK / WEIGHT: 540 Kg			
MRK: Akentler Bulv. No: 216 TEL: +90 312 385 79 17 (5 HAT) 354 26 58 FAKS: 354 40 14 OSTİM / ANKARA ŞUBE: İktihadi OSB, Sektörel San. Böl. 1.B. No: 17-19 İktihadi / İSTANBUL, Tel: +90 312 671 52 89 Fax: +90 312 671 41 95 FABR: Bahçelievler Mah. 46. Sok. No:3 Sarayköy Akyurt / ANKARA 444 6 467 - 444 6 GMS www.gocmaksan.com info@gocmaksan.com			